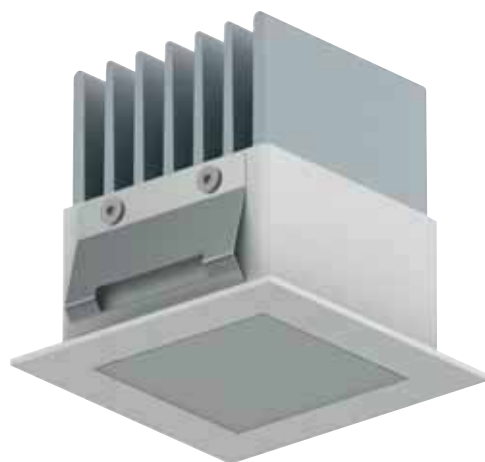


Downlight



Downlight

design: Lombardo design department



Downlight 60Q

Colori disponibili

Available colours - Couleurs disponibles



Materiale diffusore

Diffuser material - Type de diffuseur



Downlight 40T



Downlight 40Q



Downlight 60T



Downlight 120Q



Downlight 120T

(IT) Adatto per installazioni in controsoffittature di cartongesso ad uso interno. Corpo in metallo zincato a freddo con elevata resistenza all'ossidazione, verniciato con resine di poliestere stabilizzate ai raggi UV. Dissipatore in alluminio lega 6060 T5, con trattamento di anodizzazione naturale. Diffusore in PMMA satinato. Installazione ad incasso tramite molle. Alimentatore incluso, esterno al prodotto. Dimmerazione disponibile. Bulloneria in acciaio inox A4 o AISI 316L.
LED 4000K (N) o 3000K (3). Alimentazione diretta 220-240V. Nessun rischio fotobiologico, RG0 gruppo di rischio esente (EN62471).

(EN) Suitable for installation on plasterboard walls and ceilings and for indoor use. Body made of cold galvanized metal, highly resistant to oxidation due to the UV stabilized polyester resin coating. Aluminium alloy 6060 T5 heat sink with natural anodizing treatment. Diffuser made of PMMA, satin effect, joined to the body by means of a silicone gasket. Recessed installation by means of retaining spring. Ballast included, external to the product. Dimmable version available. A4 or AISI 316L stainless steel nuts and bolts.
LED 4000K (N) or 3000K (3) LED. Integral ballast 220-240V. No risk of photobiological damage, RG0 group (EN62471).

(FR) Egalement adapté pour les installations murales et les faux plafonds en placoplâtre et à l'usage à l'extérieur. Corps en métal zingué à froid dont la résistance à l'oxydation est très élevée, verni avec des résines de Polyester stabilisées aux rayons UV. Dissipateur en aluminium alliage 6060 T5, avec traitement d'anodisation naturelle. Diffusor en PMMA satiné, fixé au corps au moyen d'un joint en silicone. Installation à encastrement au moyen de ressorts. Alimentateur inclus, extérieur au produit. Version dimmable disponible.
Fixation en acier inox type A4 ou AISI 316L.
LED 4000K (N) ou 3000K (3) (blanche chaude). Alimentation intégrée 220-240. Pas de risque photobiologique, RG0 groupe (EN62471).

Completamento codici

Code completion - Complètement des codes

colore led - completare il codice sostituendo al quadrato rosso la lettera o il numero corrispondente alla temperatura colore scelta.

colour of the led - complete the code by replacing the red box with the letter or number corresponding to the selected colour temperature.

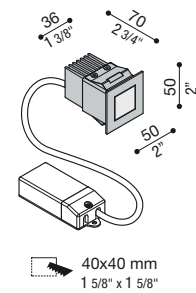
couleur led - compléter le code en remplaçant le carré rouge par la lettre ou le numéro correspondant à la sélection de température couleur.

N = (4000K)
3 = (3000K, lumen -5%)

Downlight

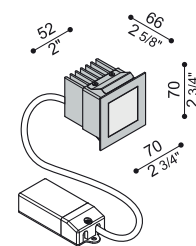
design: Lombardo design department

Downlight 40Q		LED	Specif.	Col.	poliGLASS
IP 40 IP 44 IK 06 1J xx3 Versione quadrata. Peso prodotto: 0.15 kg. Square version. Product weight: 0.15 Kg/0.33Lb. Version carrée. Poids produit: 0.15 Kg/0.33Lb.	= 4	LED 700 lm 7,5W real output lm 260	CL.II	<input type="checkbox"/>	LL122027
		LED 700 lm 7,5W real output lm 260	CL.I	<input type="checkbox"/>	LL122028
		LED 700 lm 7,5W real output lm 260	CL.I	<input type="checkbox"/>	LL122029
					led colour N = (4000K) 3 = (3000K, lm -5%)



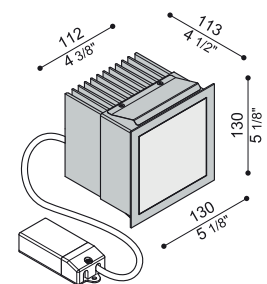
40x40 mm
1 5/8" x 1 5/8"

Downlight 60Q		LED	Specif.	Col.	poliGLASS
IP 40 IP 44 IK 06 1J xx3 Versione quadrata. Peso prodotto: 0.25 kg. Square version. Product weight: 0.25 Kg/0.55Lb. Version carrée. Poids produit: 0.25 kg/0.55Lb.	= 4	LED 965 lm 8W real output lm 464	CL.II	<input type="checkbox"/>	LL122006
		LED 965 lm 8W real output lm 464	CL.II	<input type="checkbox"/>	LL122007
		LED 965 lm 8W real output lm 464	CL.II	<input type="checkbox"/>	LL122008
					led colour N = (4000K) 3 = (3000K, lm -5%)
					led colour N = (4000K) 3 = (3000K, lm -5%)



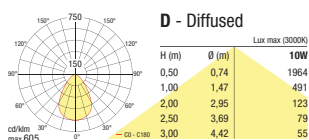
60x60 mm
2 3/8" x 2 3/8"

Downlight 120Q		LED	Specif.	Col.	poliGLASS
IP 40 IP 44 IK 06 1J xx3 Versione quadrata. Peso prodotto: 2.5 kg. Square version. Product weight: 2.5 Kg/5.51Lb. Version carrée. Poids produit: 2.5 kg/5.51Lb.	= 4	LED 2060 lm 18W real output lm 1335	CL.II	<input type="checkbox"/>	LL122018
		LED 2060 lm 18W real output lm 1335	CL.II	<input type="checkbox"/>	LL122019
		LED 2060 lm 18W real output lm 1335	CL.II	<input type="checkbox"/>	LL122020
					led colour N = (4000K) 3 = (3000K, lm -5%)
					led colour N = (4000K) 3 = (3000K, lm -5%)

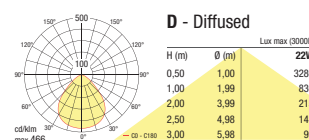


120x120 mm
4 3/4" x 4 3/4"

Photometric curves - Downlight 60Q - LL122009N



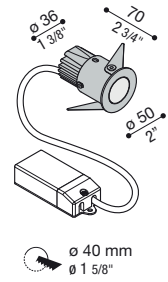
Photometric curves - Downlight 120Q - LL122021N



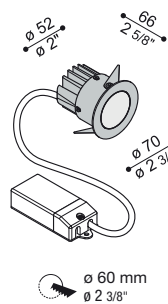
Downlight

design: Lombardo design department

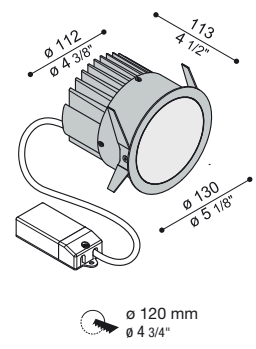
Downlight 40T		LED	Specif.	Col.	poliGLASS
IP 40 IP 44 IK 06 1J xx3 Versione tonda. Peso prodotto: 0.15 kg. Round version. Product weight: 0.15 Kg/0.33Lb. Version ronde. Poids produit: 0.15 Kg/0.33Lb.		LED 700 lm 7,5W real output lm 274	CL.II	<input type="checkbox"/>	LL122024
		LED 700 lm 7,5W real output lm 274	CL.II	<input type="checkbox"/>	LL122025
		LED 700 lm 7,5W real output lm 274	CL.II	<input type="checkbox"/>	LL122026
				led colour N = (4000K) 3 = (3000K, lm -5%)	



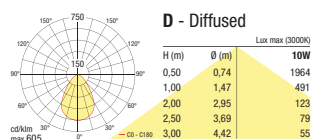
Downlight 60T		LED	Specif.	Col.	poliGLASS
IP 40 IP 44 IK 06 1J xx3 Versione tonda. Peso prodotto: 0.2 kg. Round version. Product weight: 0.2 Kg/0.44Lb. Version ronde. Poids produit: 0.2 kg/0.44Lb.		LED 965 lm 8W real output lm 409	CL.II	<input type="checkbox"/>	LL122000
		LED 965 lm 8W real output lm 409	CL.II	<input type="checkbox"/>	LL122001
		LED 965 lm 8W real output lm 409	CL.II	<input type="checkbox"/>	LL122002
				led colour N = (4000K) 3 = (3000K, lm -5%)	



Downlight 120T		LED	Specif.	Col.	poliGLASS
IP 40 IP 44 IK 06 1J xx3 Versione tonda. Peso prodotto: 2 kg. Round version. Product weight: 2 Kg/4.40Lb. Version ronde. Poids produit: 2 kg/4.40Lb.		LED 2060 lm 18W real output lm 1356	CL.II	<input type="checkbox"/>	LL122012
		LED 2060 lm 18W real output lm 1356	CL.II	<input type="checkbox"/>	LL122013
		LED 2060 lm 18W real output lm 1356	CL.II	<input type="checkbox"/>	LL122014
				led colour N = (4000K) 3 = (3000K, lm -5%)	



Photometric curves - Downlight 60T - LL122003N



Photometric curves - Downlight 120T - LL122015N

