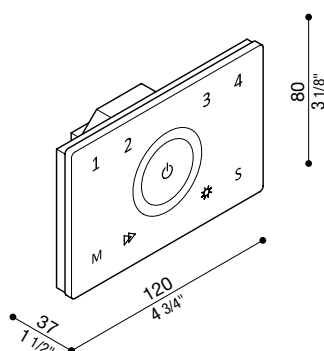


DMX512 RGBW 4-zone controller

LBX001234

Lombardo.



Product Description

4-zone DMX512 RGBW controller, designed to provide advanced and customized lighting control. Each zone can be set to an individual color, allowing for dynamic and tailored atmospheres in any setting.

Each zone (1, 2, 3, 4) must be assigned a DMX channel of the product. When placing an order, it is necessary to specify the DMX channel number on which the products should be configured to ensure proper system functionality. There is no limit to the number of products per zone: multiple products can be assigned to the same DMX channel and therefore synchronized.

Example installation

Configuration for an Italian flag using 9 products:

- 3 products assigned to DMX channel 1, matched to zone 1
 - 3 products assigned to DMX channel 2, matched to zone 2
 - 3 products assigned to DMX channel 3, matched to zone 3
- This setup allows for precise and customizable scenic effects, ideal for decorative and professional contexts.

IMPORTANT: When placing an order, the desired DMX channel for each product must be specified. For more information or technical support, contact tecnico@lombardo.it.

Input and Output

Voltage in Input	100-240VAC
Current Input	Max 0.1 A
Output signal	DMX512, RF 2.4GHz

Warranty

Warranty	5 years
-----------------	---------

About Dimming

Input signal	RF 2.4GHz + panel touch
RF Remote control	10m
Dimming level	256 levels
Dimming range	0-100%

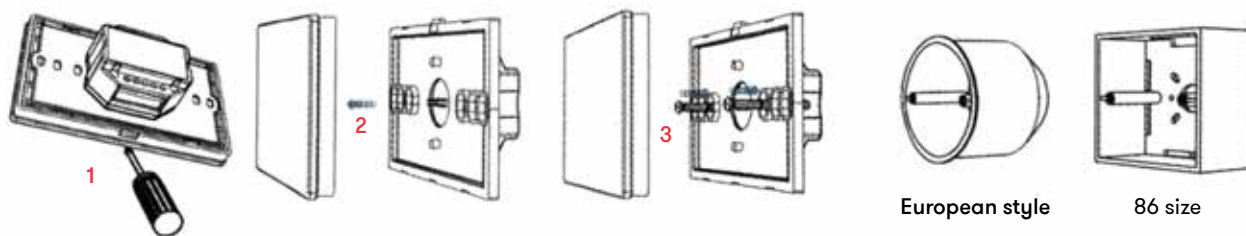
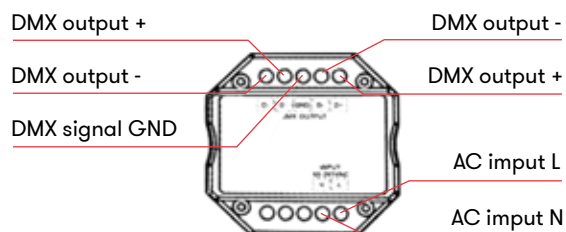
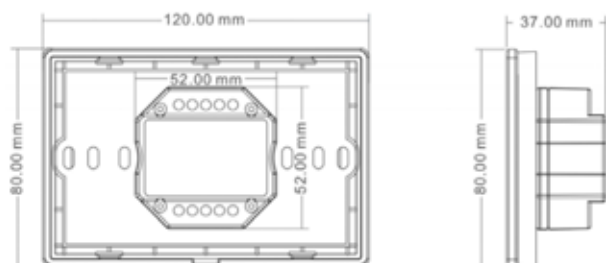
Environment

Operation Temperature	Ta: -30°C ÷ +55°C
Maximum temperature at tc	Tc: +65°C
IP rating	IP20

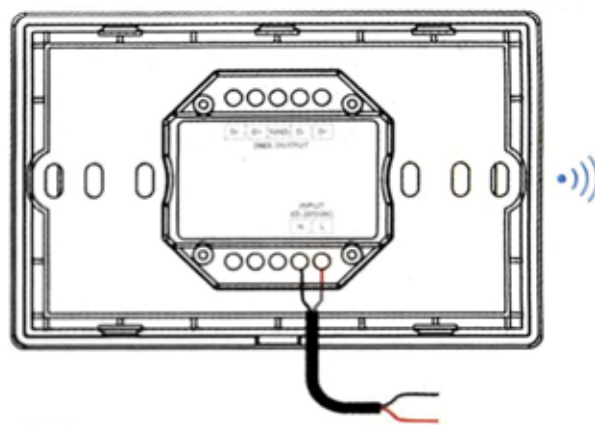
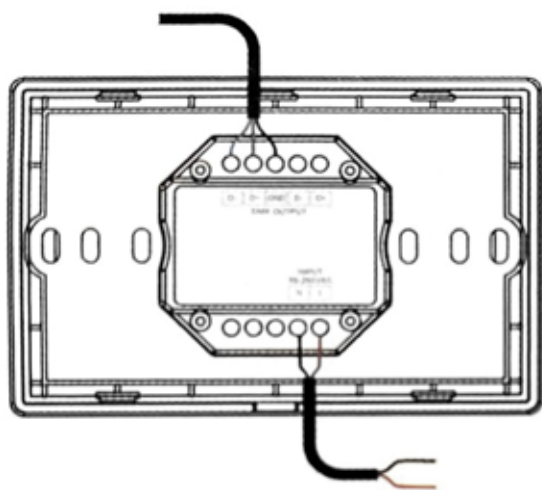
DMX512 RBGW 4-zone controller LBX001234

Lombardo.

Mechanical structure and installation



Wiring diagram



DMX512 RBGW 4-zone controller

LBX001234


Lombardo.

Key functions

Each zone can correspond to a single-color, dual-color (WW/CW), RGB, RGBW, or RGB+CCT(WW/CW) controller or lamp.

To enter the zone light setting:

- 1 Tap the power button to turn on the light.
- 2 Press the power button again to turn off the light.
- 3 Hold down the power button immediately for 5 seconds.
- 4 As soon as I enter the setting, press 1/2/3/4 Zone to set them.

For example, if you want to change the light type of zone 1 as an RGB type, press the Zone 1 button for 2 seconds for a long time, and then press  indicator for 2 seconds, doing so sets Zone 1 as RGB type.



Long press 2 second, set current zone as single color type.



Long press 2 second, set current zone as dual color type.



Long press 2 second, set current zone as RGB type.



Long press 2 second, set current zone as RBGW type.




Long press 2 second, set current zone as RGB+CCT type.

Note

- 1 For the single color, the RGB/CCT touch wheel changes only brightness. RGB, MODE, SPEED buttons are invalid.
- 2 For dual color, tapping the RGB/CCT wheel will only change the color temperature. RGB, MODE, SPEED buttons are invalid.
- 3 For RGB, when you tap the CCT wheel, adjust the color temperature based on the R/G/B mix channel.
- 4 For RGBW, when you tap the CCT wheel, adjust the brightness of the W channel.
- 5 Turn on/off the tone of the button: Press the power button to turn off all lights and wait 5 seconds after closing. Press for 10s power button when all the lights in the area are turned off, the tone turns on or off.
- 6 The DMX-T4-ZONE device keeps the memory of the last command set.

If you want to change zone 2/3/4, press the Desired Zone button for 2 seconds, then repeat the steps described above. Short press on the ON/OFF button or on the color wheel or waiting for time-out 10 seconds, you will exit the area light type setting.

The short pressure  turns on the zone light and selects the zone at the same time. Press 2s for a long time to turn off the zone light.

There are 4 separate or synchronous zone controls, each zone could control multiple receivers.

Only multiple zones with the same light type can be selected synchronously.



Turn the light on or off



RGB/Color Temperature

Press RGB or CCT to change from RGB to CCT



24-level RGB



For double colors or RGB+CCT(WW/CW), adjust temperature with WW/CW channels. A short press set 11 levels of tunable white, if pressed for 2 seconds sets the maximum or minimum color temperature available in the channel.

For RGB adjust the temperature color doing a mix on R G B channels; can set 11 tunable white levels.

For RGBW adjusts the brightness of the W channel, until 11 levels. A longer tap of 2 seconds brings the brightness of the White channel to 100% or 0%.



One touch starts 10 dynamic models, a touch of 2 sec. starts a modecycle.



One tap to repeat scenes. Long press for 2 sec. saves the color in the scene. Recall the 4 scenes or save them in sync.



Adjust the brightness, one touch set 10 levels of brightness, pressing for 1-6 sec adjust the brightness up to 256 levels continuously.



RGB mode: with a short touch it sets up to 10 levels of colour rotation speed, keeping the button pressed for 2s goes to the default speed.

For static RGB colour, adjust the saturation, i.e., short pressing the button slowly changes the current static RGB colour to white up to 11 levels, instead long pressing for 1-6s adjusts continuously the colours up to 256 levels.

DMX512 RBGW 4-zone controller

LBX001234

Lombardo.

DMX Master

Light type	Light channel					Zona1 DMX address	Zona2 DMX address	Zona3 DMX address	Zona4 DMX address
Single color	W	W	W	W	W	1-5	6-10	11-15	16-20
Double color	WW	CW	WW	CW	O	1-5	6-10	11-15	16-20
RGB	R	G	B	O	O	1-5	6-10	11-15	16-20
RGBW	R	G	B	W	W	1-5	6-10	11-15	16-20
RGB+CCT	R	G	B	WW	CW	1-5	6-10	11-15	16-20

Dynamic mode list

No.	Name	No.	Name
1	RGB jumps	6	RGB fade in and out
2	RGB smooth	7	Red fade in and out
3	6 color jumps	8	Blue fade in and out
4	6 color smooth	9	Green fade in and out
5	Smooth color temperatures	10	White fade in and out

Manage the panel as a remote rf

USE THE CONTROLLER MATCH KEY

Match:

Press the match button, immediately press the zone button of the touch panel.

Delete:

Hold down the match button for 5s to eliminate all matches, lighting lights 5 times means that all paired remote controls have been deleted and is ready to use.

USE POWER RESTART

Match:

Turn off the receiver power supply, then turn on the power again, immediately press the Zone button 3 times on the touch panel. If the light flashes 3 times means that the match is successful.

Delete:

Turn off the receiver power supply, then turn on the power again, immediately press the Zone button 5 times on the touch panel. If the light flashes 5 times means that all paired remote controls have been eliminated.