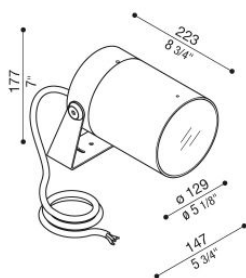


Pad Maxi RGBW

LX157025M

Lombardo.



Informazioni tecniche:

Installazione:	Terra, Parete, Superficie terra, Superficie parete
Materiale Corpo:	Alluminio
Finitura:	Alluminio Anodizzato Marrone
Trattamento:	Anodizzazione
Tipo di diffusore:	Vetro trasparente
Inclinazione ottica:	20°
Tipo lampada:	LED
CRI:	>80
LB Factor:	L70B10 - 50.000h
Step MacAdam:	3
Potenza assorbita Watt:	40
Lumen:	3100
Real Lumen:	2365
Alimentazione:	☑️ integrata
LED:	220-240 V DMX 512
Classe di isolamento:	⊕ CL.I
Cavo Alimentazione:	0,8m LifY 3X1,5mmq + LifYD11Y 2X0,25mmq
Grado di protezione:	IP 66
Resistenza alla rottura:	IK 08 5J xx7
Marchi di Conformità:	CE UK
Temperatura di funzionamento:	-30°C / +50°C

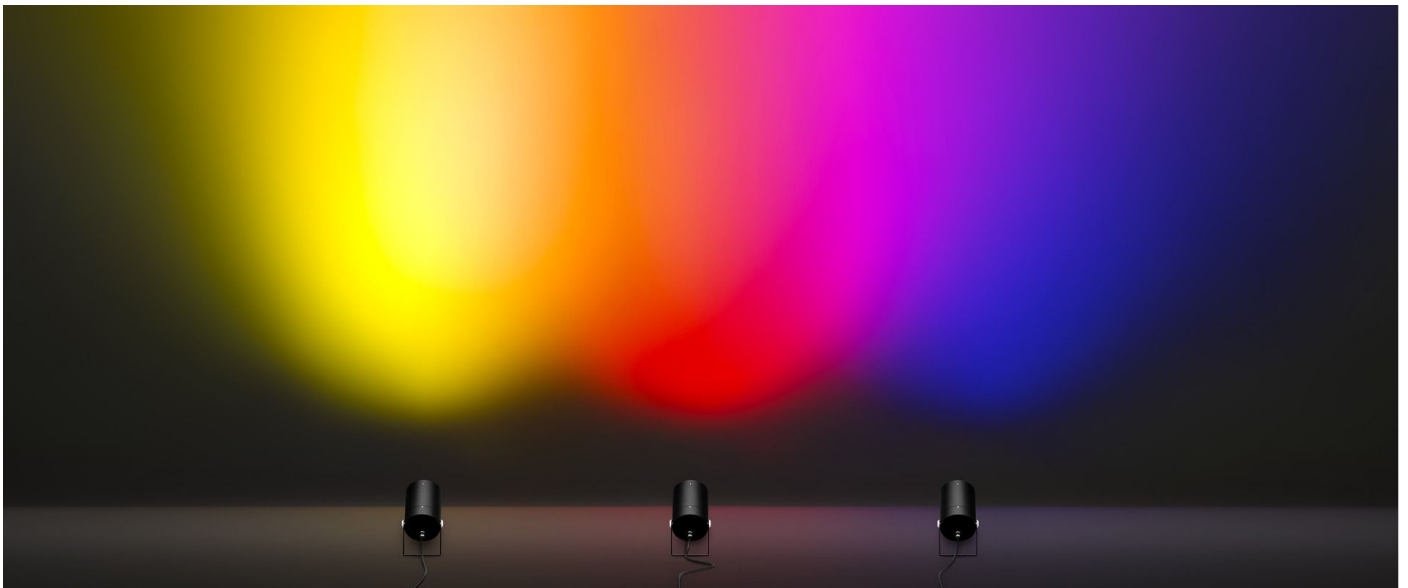
Cavo 0,8m LifY 3X1,5mmq + LifYD11Y 2X0,25mmq. Led RGBW - W=5700K R=15% G=30% B=10% W=45%



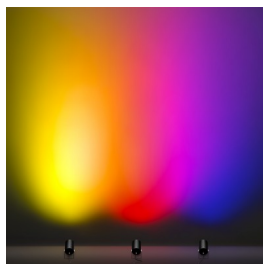
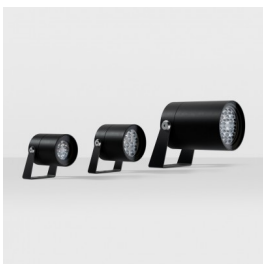
Pad Maxi RGBW

Lombardo.

LX157025M



Immagini di montaggio:

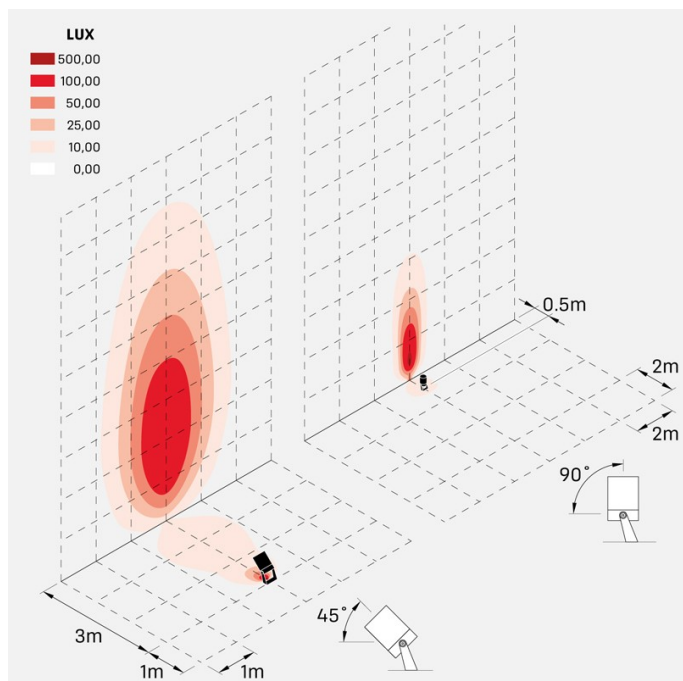


Pad Maxi RGBW

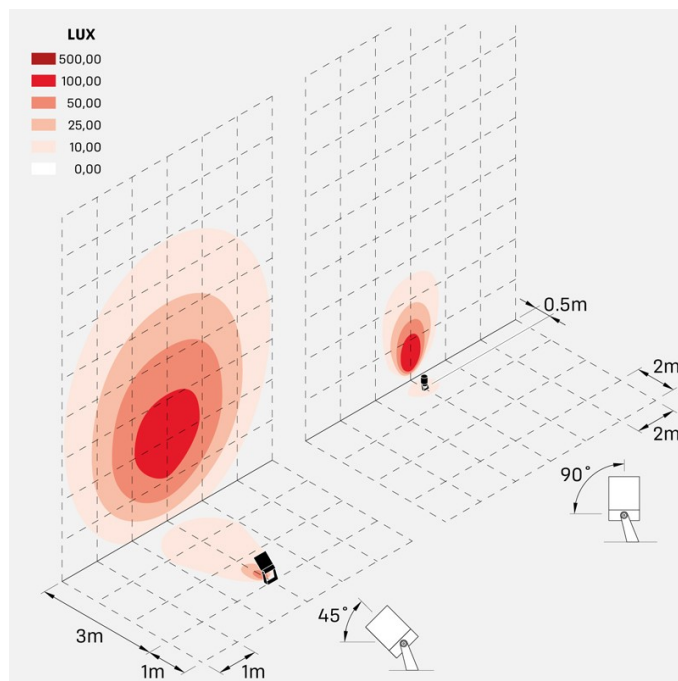
Lombardo.

LX157025M

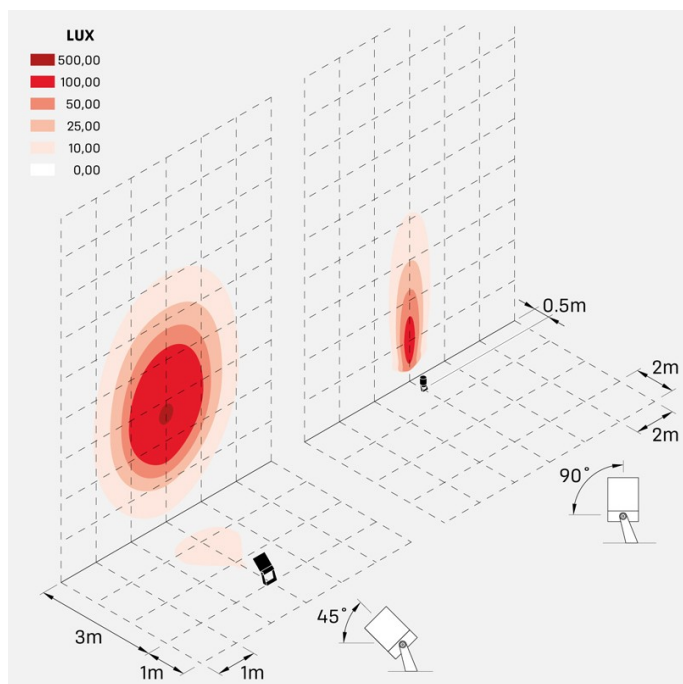
Simulazioni illuminotecniche:



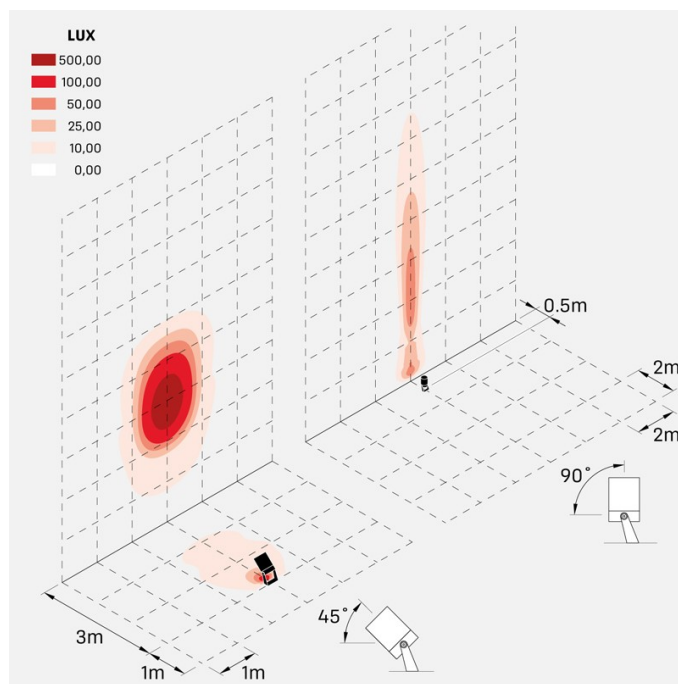
pad_maxi_rgbw_optic_A



pad_maxi_rgbw_optic_L



pad_maxi_rgbw_optic_M



pad_maxi_rgbw_optic_S

Pad Maxi RGBW

LX157025M

Lombardo.

Curva fotometrica:

