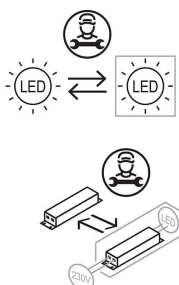


Technical information:

| | |
|------------------------------------|----------------------|
| Installation: | Ground, Post Ø60 |
| Material: | Aluminium |
| Finish: | Corten |
| Treatment: | Sea Treatment |
| Diffuser type: | PMMA |
| Lamp type: | LED |
| Energy performance class: | F |
| Colour temperature: | 2700K |
| CRI: | >80 |
| LB Factor: | L80B20 - 50.000h |
| Photobiological risk: | RG0 |
| Power consumption (Watt): | 14 |
| Lumen: | 1920 |
| Real Lumen: | 630 |
| Power supply: | ☑ integrated |
| LED: | 220-240 V |
| Circuit breaker | 45-75-64-106 |
| B10 - C10 - B16 - C16 | |
| Insulation class: | ⊕ CL.I |
| Power cable: | 1 m H05RN-F |
| Type of protection: | IP 66 |
| Resistance to breakage: | IK 10 20J xx9 |
| Standards and Marks of Conformity: | CE UK ENEC |

Light beam 360°.

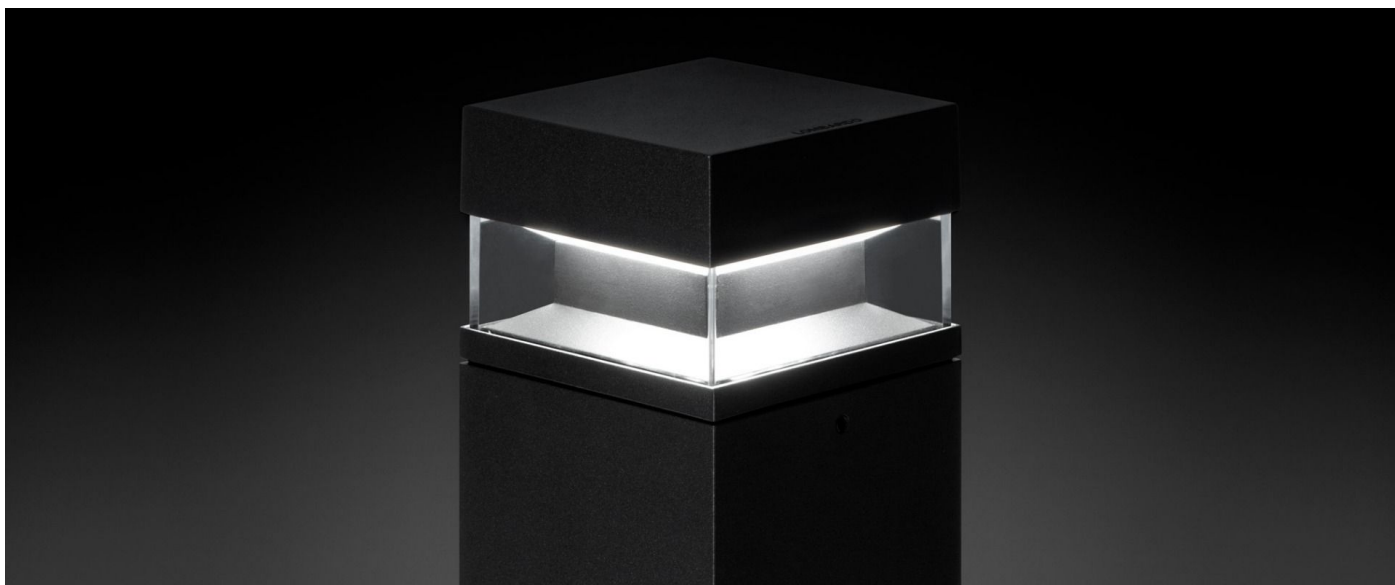
All parts in direct contact with the soil must never be covered by the soil itself or come into contact with aggressive chemicals (e.g. fertilisers, herbicides, pool and/or floor cleaning products, etc.). Clean parts covered with soil build-up or cement dust periodically. Outdoor products must be installed with the appropriate plastic accessories. They must not be installed directly on the ground or directly on concrete because contact between the two materials can create accelerated oxidation of the device.



Tok Q H400

LL12813K2

Lombardo.



Installation images:

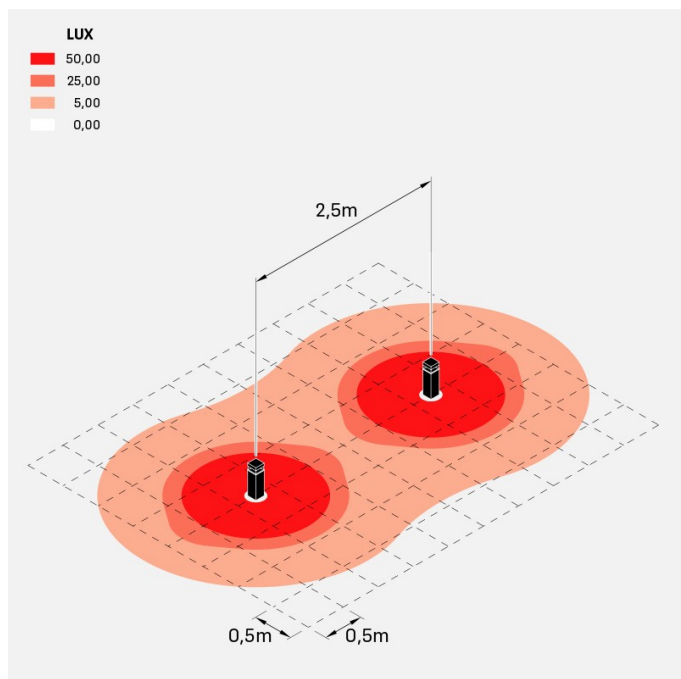


Tok Q H400

LL12813K2

Lombardo.

Lighting simulation:



tok_Q_400