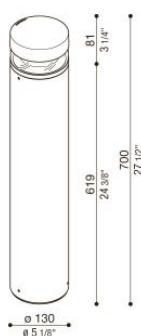


### Technical information:

Installation:	Ground, Post Ø60
Material:	Aluminium
Finish:	Grey High Tech RAL 9006
Treatment:	Sea Treatment
Diffuser type:	PMMA
Lamp type:	LED
Energy performance class:	E
Colour temperature:	4000K
CRI:	>80
LB Factor:	L80B20 - 50.000h
Photobiological risk:	RG1
Power consumption (Watt):	14
Lumen:	1860
Real Lumen:	650
Power supply:	✓ integrated
LED:	220-240 V
Circuit breaker	45-75-64-106
B10 - C10 - B16 - C16	
Insulation class:	⊕ CL.I
Power cable:	1 m H05RN-F
Type of protection:	<b>IP 66</b>
Resistance to breakage:	<b>IK 10 20J xx9</b>
Standards and Marks of Conformity:	CE UK



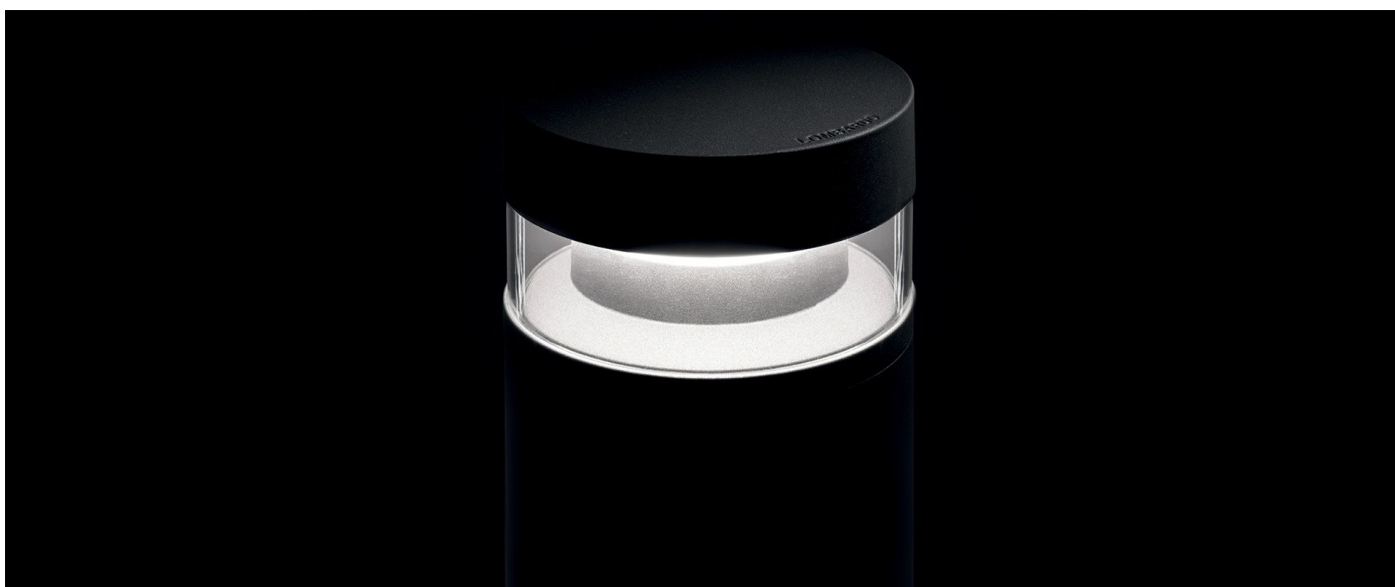
*All parts in direct contact with the soil must never be covered by the soil itself or come into contact with aggressive chemicals (e.g. fertilisers, herbicides, pool and/or floor cleaning products, etc.). Clean parts covered with soil build-up or cement dust periodically. Outdoor products must be installed with the appropriate plastic accessories. They must not be installed directly on the ground or directly on concrete because contact between the two materials can create accelerated oxidation of the device.*



# Tok H700

LL128015N

**Lombardo.**



## Installation images:



**Lombardo S.r.l.**

Via Pizzigoni 3, Villongo (BG) - 24060 - Italy - T 0039 035 939 411 - E [info@lombardo.it](mailto:info@lombardo.it)

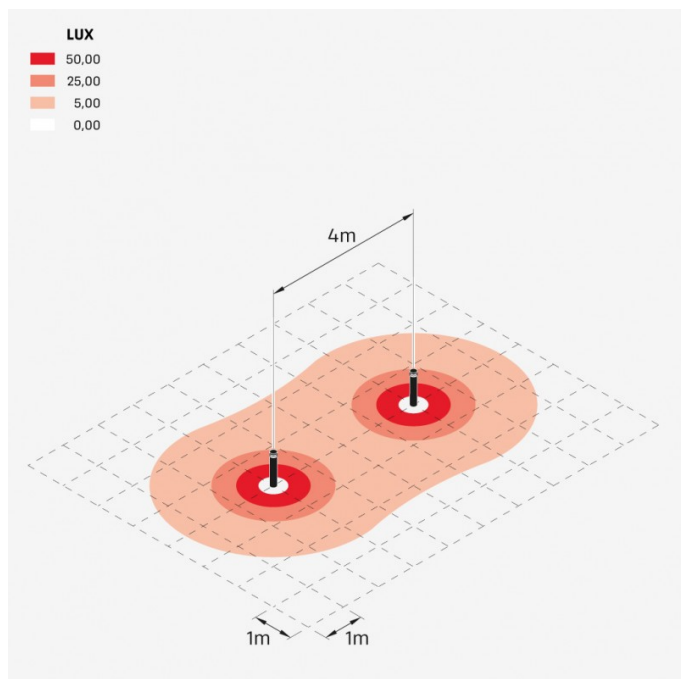
**lombardo.it**

# Tok H700

## LL128015N

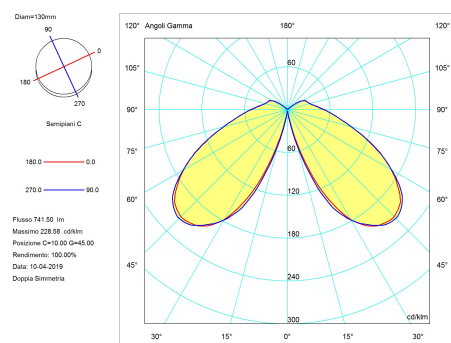
**Lombardo.**

### Lighting simulation:



Tok\_H700

### Photometric curves:



**Lombardo S.r.l.**

Via Pizzigoni 3, Villongo (BG) - 24060 - Italy - T 0039 035 939 411 - E [info@lombardo.it](mailto:info@lombardo.it)

**lombardo.it**