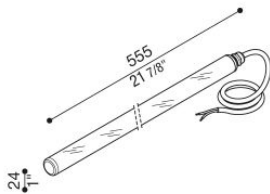


# TNC 555

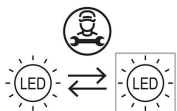
## LL139200N

# Lombardo.



### Technical information:

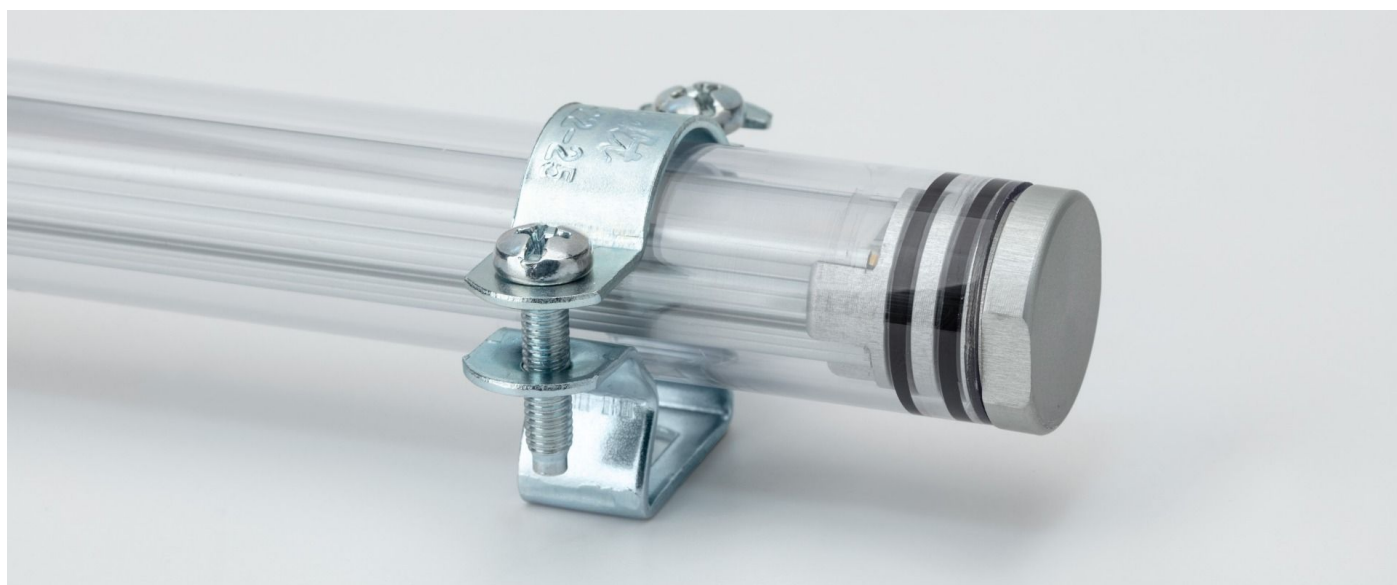
Installation:	Wall, Ceiling, Surface mounting wall, Surface mounting ceiling
Material:	PMMA
Diffuser type:	PMMA
Lamp type:	LED
Colour temperature:	4000K
CRI:	>80
LB Factor:	L80B20 - 50.000h
Photobiological risk:	RG1
Power consumption (Watt):	10
Lumen:	1100
Real Lumen:	666
Power supply:	⊗ not included
LED:	24V
Insulation class:	⊖ CL.III
Power cable:	1 m H05RN-F
Type of protection:	<b>IP 67</b>
Resistance to breakage:	<b>IK 09 10J xx7</b>
Standards and Marks of Conformity:	CE UK CA



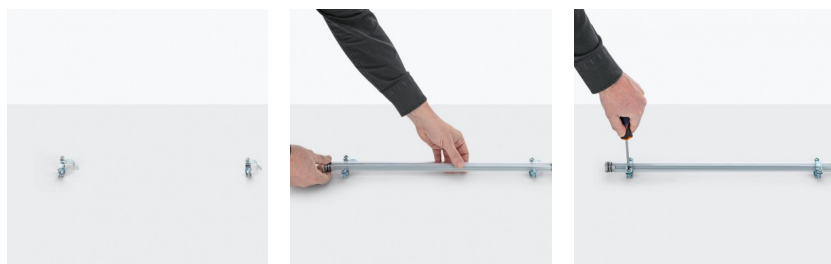
**TNC 555**

LL139200N

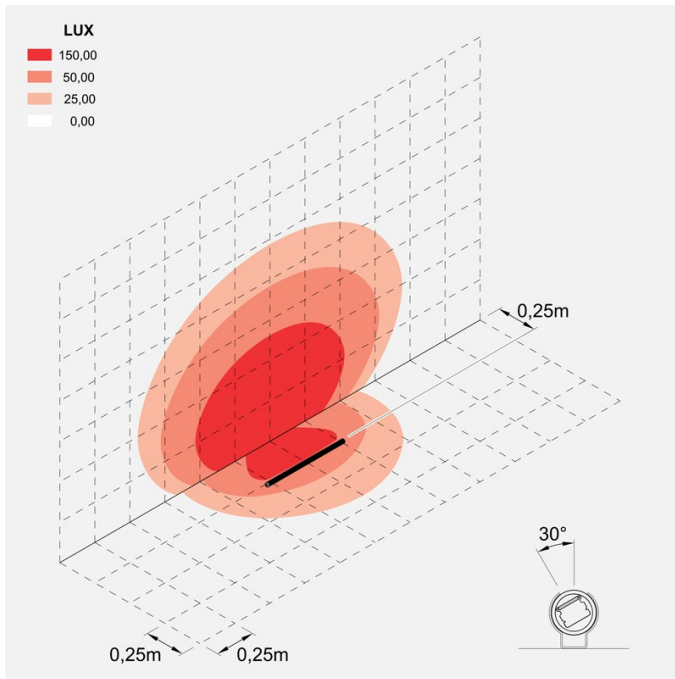
**Lombardo.**



**Installation images:**



### Lighting simulation:



tnc\_555

### Photometric curves:

