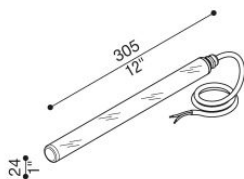


# TNC 305

LL1391002

# Lombardo.



## Technical information:

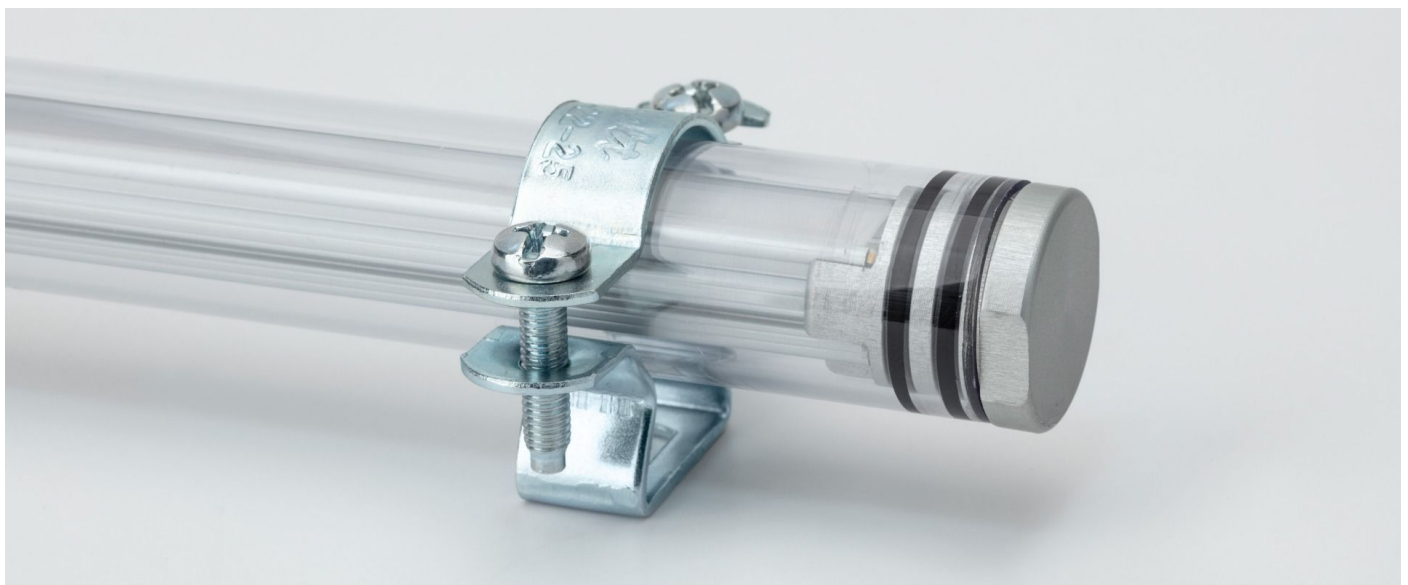
Installation:	Wall, Ceiling
Material:	PMMA
Diffuser type:	PMMA
Lamp type:	LED
Colour temperature:	2700K
CRI:	>80
LB Factor:	L80B20 - 50.000h
Photobiological risk:	RG0
Power consumption (Watt):	5
Lumen:	550
Real Lumen:	366
Power supply:	⊗ not included
LED:	24V
Insulation class:	⊓ CL.III
Power cable:	1 m H05RN-F
Type of protection:	<b>IP 67</b>
Resistance to breakage:	<b>IK 09 10J xx7</b>
Standards and Marks of Conformity:	CE UK CA



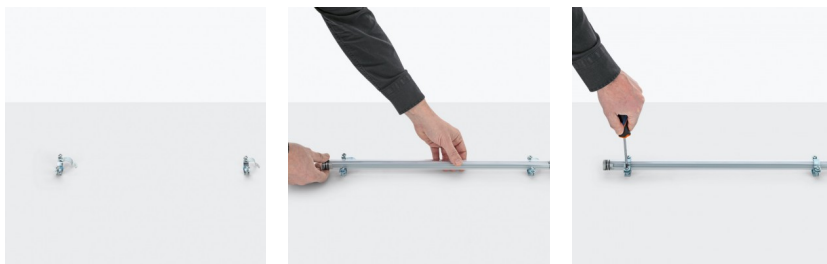
# TNC 305

LL1391002

Lombardo.

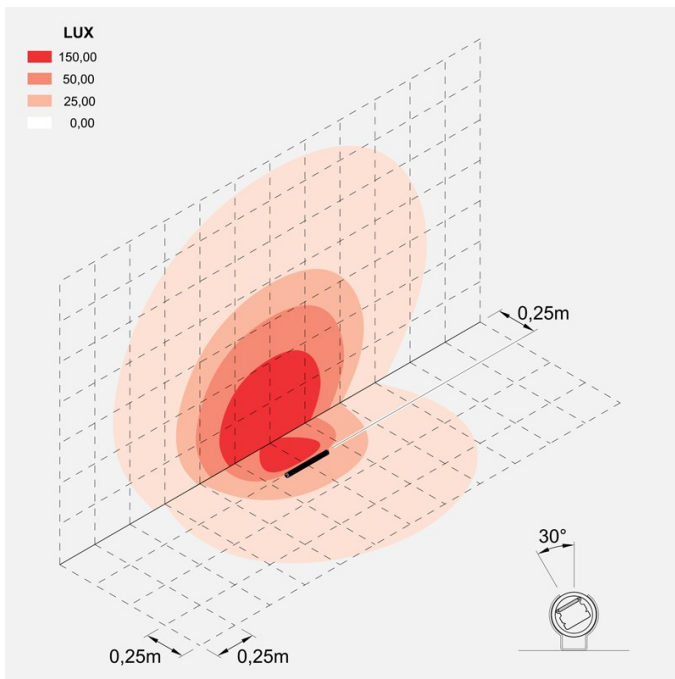


## Installation images:



LL1391002

## Lighting simulation:



tnc\_305

## Photometric curves:

