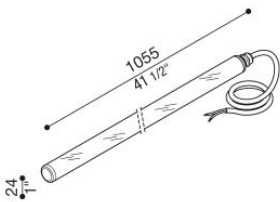


# TNC 1055

## LL1393003

# Lombardo.



### Technical information:

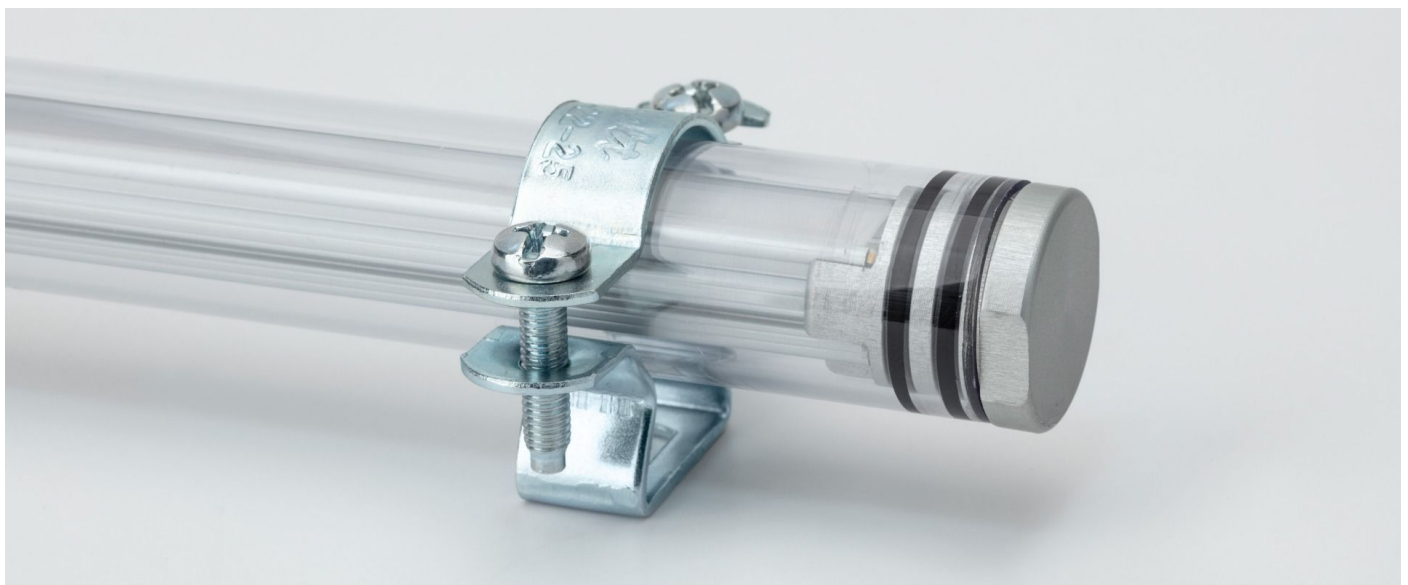
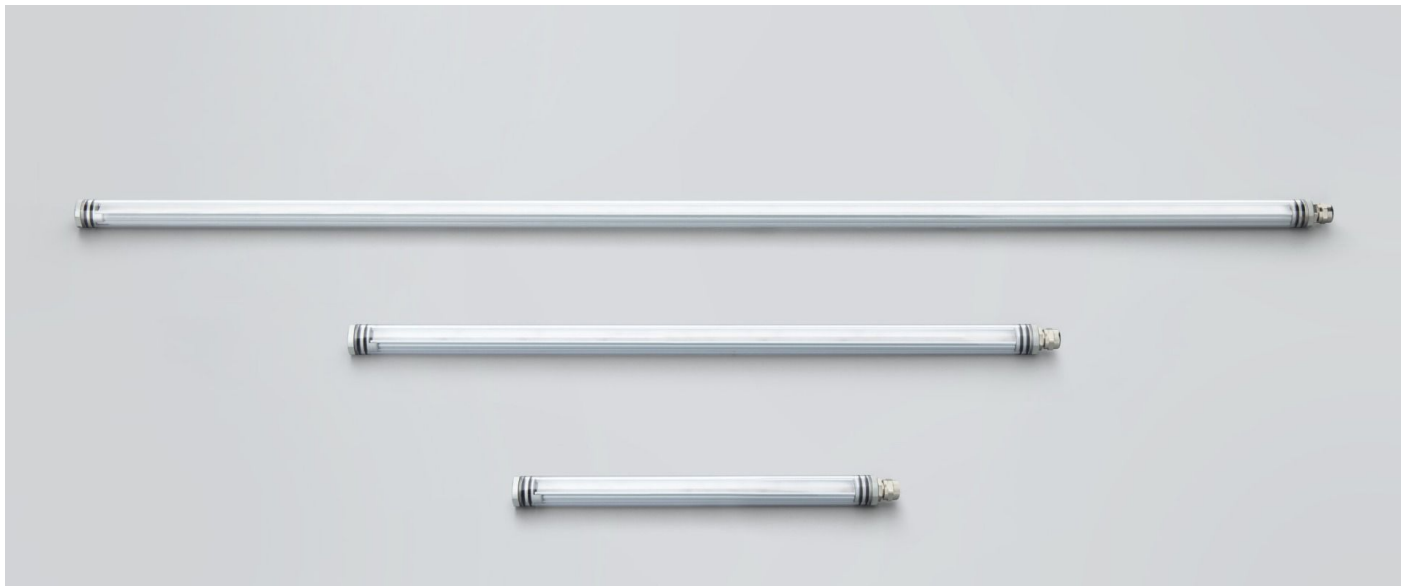
Installation:	Wall, Ceiling
Material:	PMMA
Diffuser type:	PMMA
Lamp type:	LED
Colour temperature:	3000K
CRI:	>80
LB Factor:	L80B20 - 50.000h
Photobiological risk:	RG0
Power consumption (Watt):	20
Lumen:	2200
Real Lumen:	1266
Power supply:	⊗ not included
LED:	24V
Insulation class:	⊠ CL.III
Power cable:	1 m H05RN-F
Type of protection:	<b>IP 67</b>
Resistance to breakage:	<b>IK 09 10J xx7</b>
Standards and Marks of Conformity:	CE UK CA



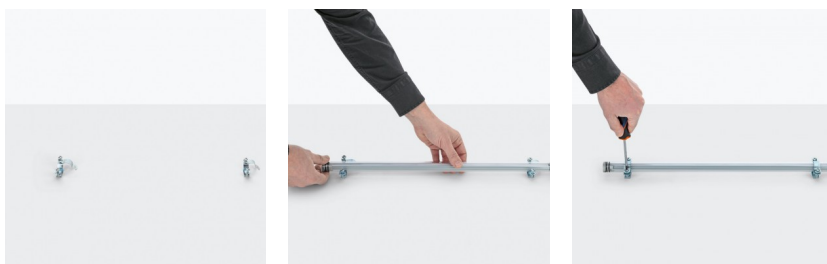
**TNC 1055**

LL1393003

**Lombardo.**

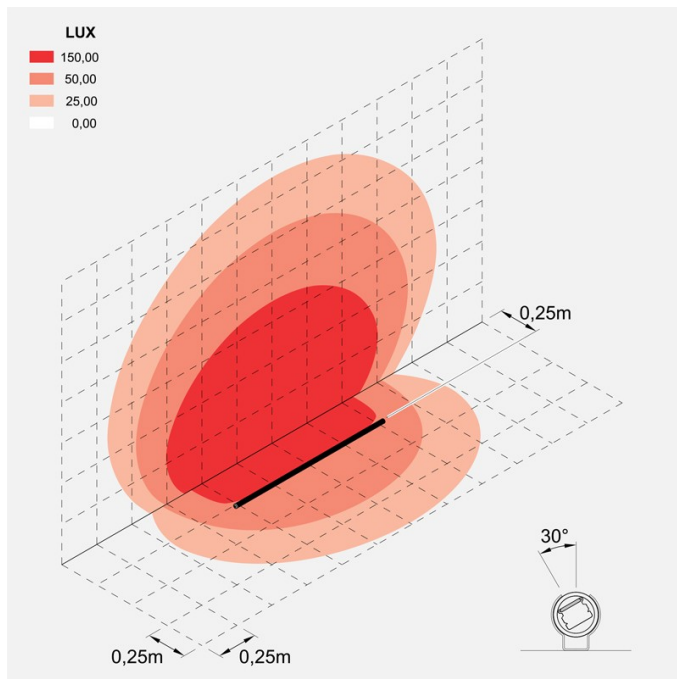


**Installation images:**



LL1393003

## Lighting simulation:



tnc\_1055

## Photometric curves:

