

Noa 50

LL133002M3

Lombardo.



Technical information:

Installation:	Wall, Ground, Ceiling
Material:	Aluminium
Finish:	Grey anthracite RAL 7021
Treatment:	Sea Treatment
Diffuser type:	Serigraphed glass
Optics:	40°
Lamp type:	LED
Energy performance class:	F
Colour temperature:	3000K
CRI:	>80
LB Factor:	L80B20 - 50.000h
Photobiological risk:	RG0
Power consumption (Watt):	9
Lumen:	1000
Real Lumen:	750
Power supply:	☑ integrated
LED:	AC DIRECT
Insulation class:	⊕ CL.I
Type of protection:	IP 66
Resistance to breakage:	IK 07 2J xx5
Standards and Marks of Conformity:	CE UK EA
Dimming	Phase cut

Optic D not available for Honeycomb version.



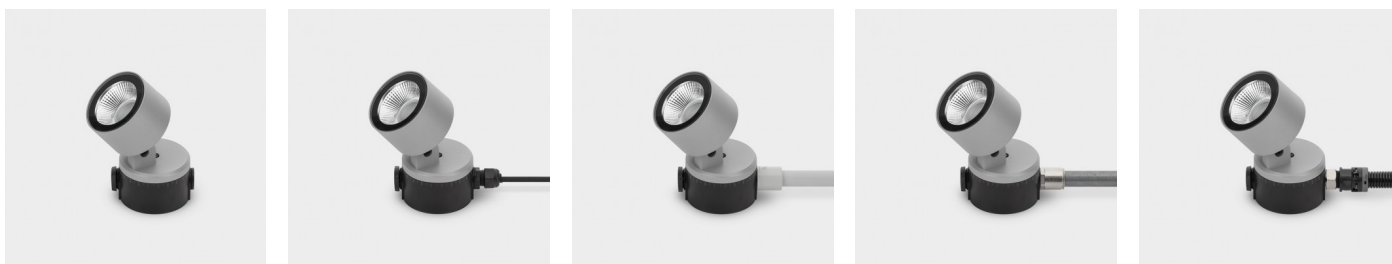
Noa 50

LL133002M3

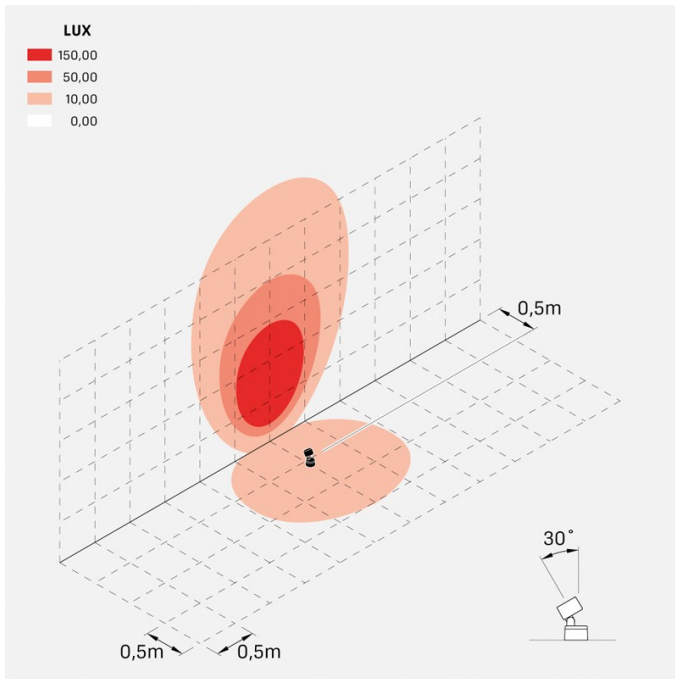
Lombardo.



Installation images:



Lighting simulation:



noa_50_optic_m

Photometric curves:

