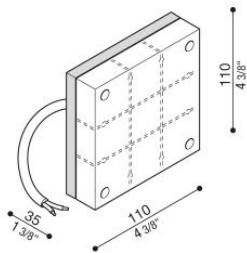


# Kobo 110

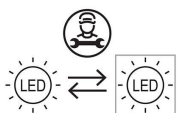
LL130001N

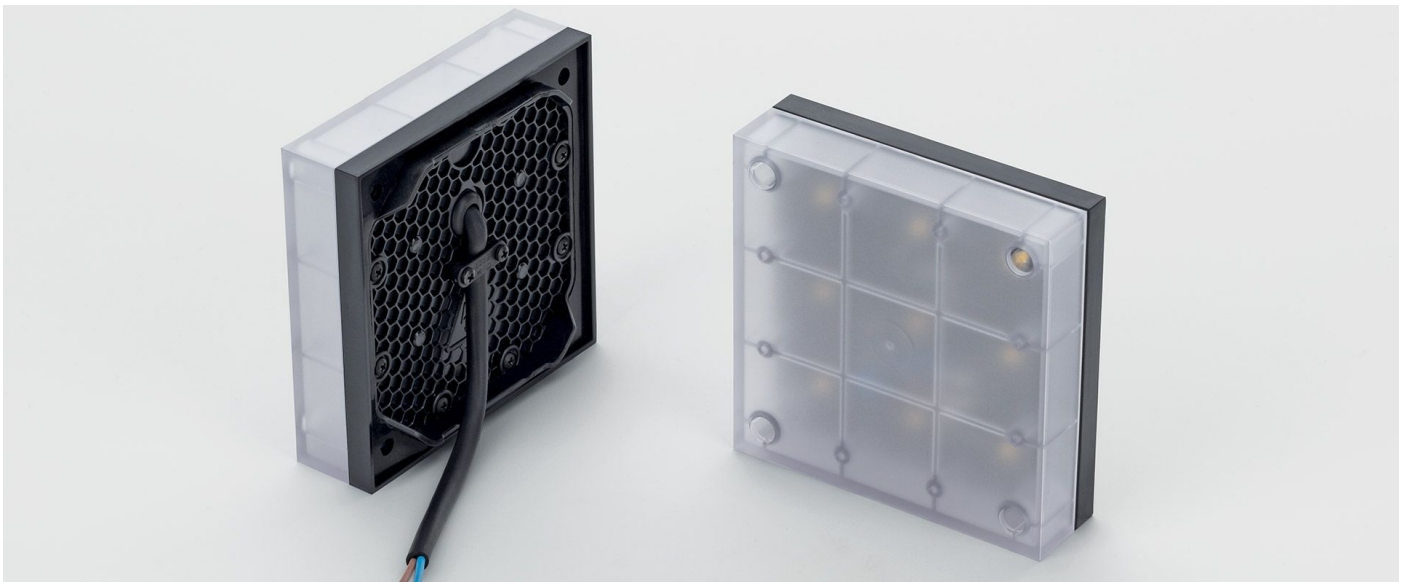
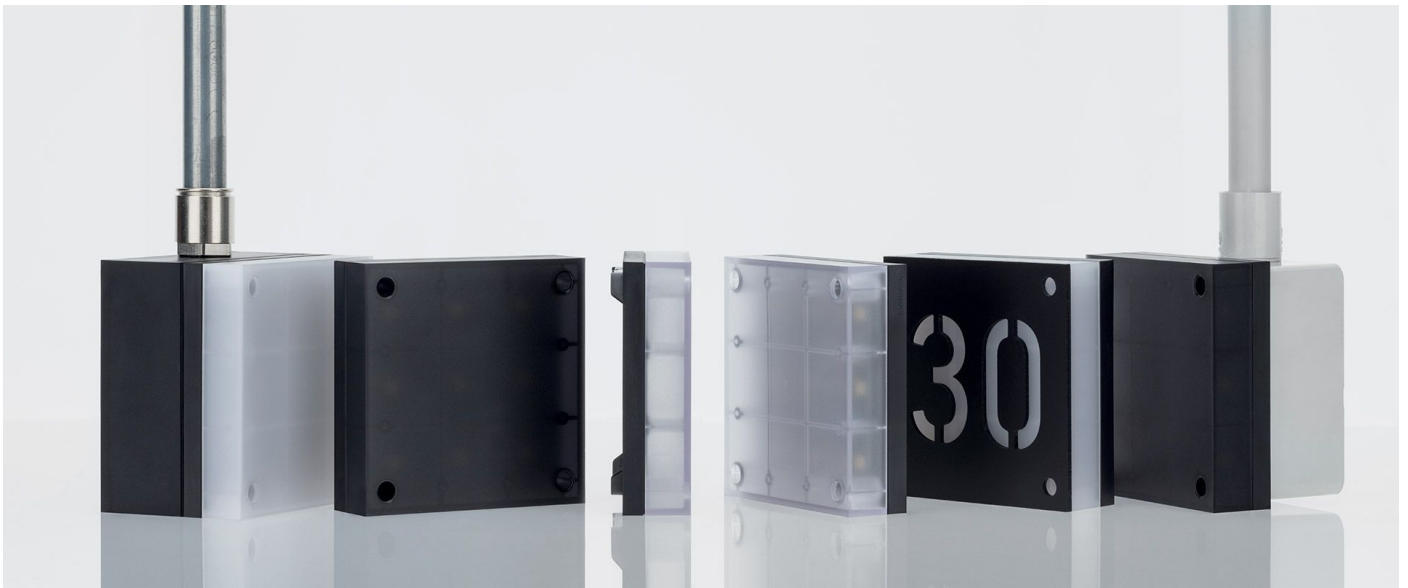
**Lombardo.**



## Technical information:

Installation:	Wall, Ceiling
Diffuser type:	Polycarbonate
Lamp type:	LED
Colour temperature:	4000K
CRI:	>80
LB Factor:	L80B20 - 50.000h
Photobiological risk:	RG0
Power consumption (Watt):	8
Lumen:	1000
Real Lumen:	570 - 700
Power supply:	☑ integrated
LED:	AC DIRECT
Insulation class:	☐ CL.II
Type of protection:	<b>IP 66</b>
Resistance to breakage:	<b>IK 08 5J xx7</b>
Standards and Marks of Conformity:	CE UK EA

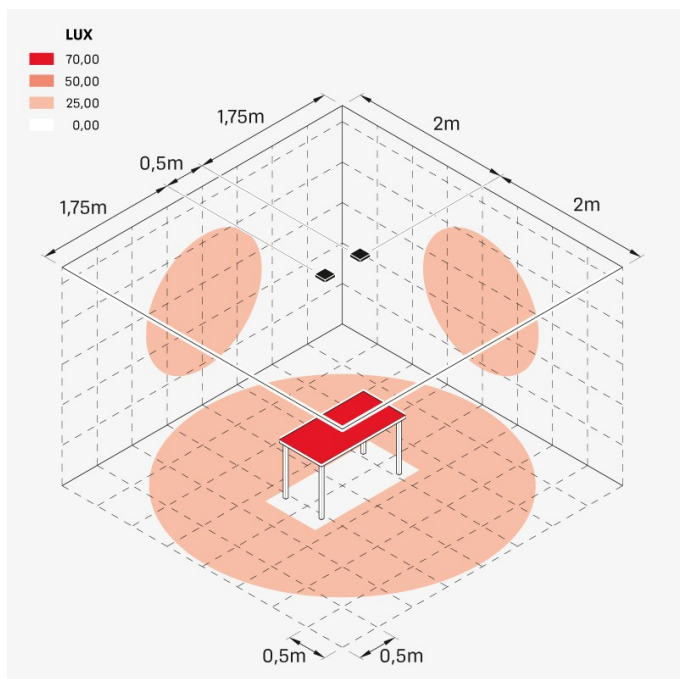




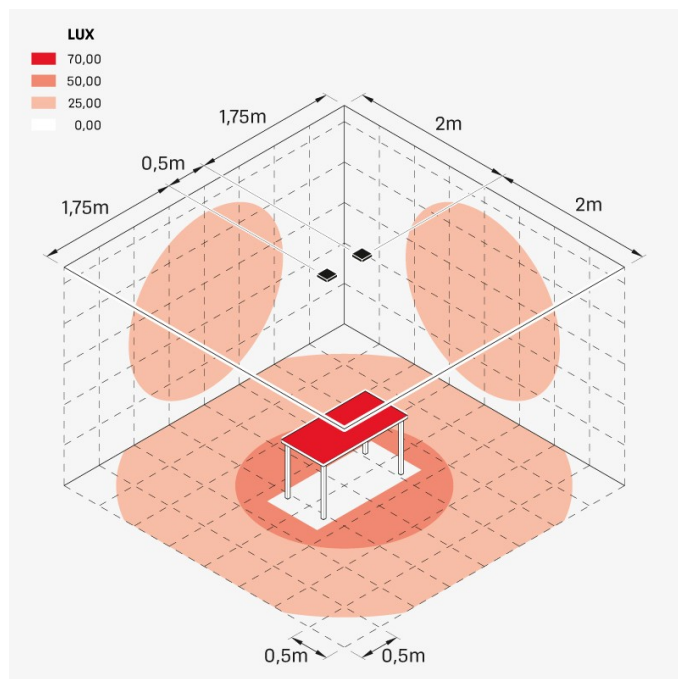
## Installation images:



### Lighting simulation:



Kobo\_110\_poliglass



Kobo\_110\_semitrasp