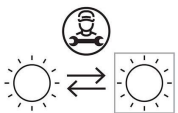


### Technical information:

Installation:	Wall
Material:	Aluminium
Finish:	Dark Grey RAL 7021
Treatment:	Sea Treatment
Diffuser type:	Polycarbonate
Lamp type:	LED
Energy performance class:	G
Colour temperature:	3000K
CRI:	>80
LB Factor:	L80B20 - 50.000h
Photobiological risk:	RG0
Power consumption (Watt):	3
Lumen:	360
Real Lumen:	120
Power supply:	✓ integrated
LED:	AC DIRECT
Insulation class:	⊖ CL.I
Type of protection:	<b>IP 54</b>
Resistance to breakage:	<b>IK 10 20J xx9</b>
Standards and Marks of Conformity:	CE UK ER
Dimming	Phase cut

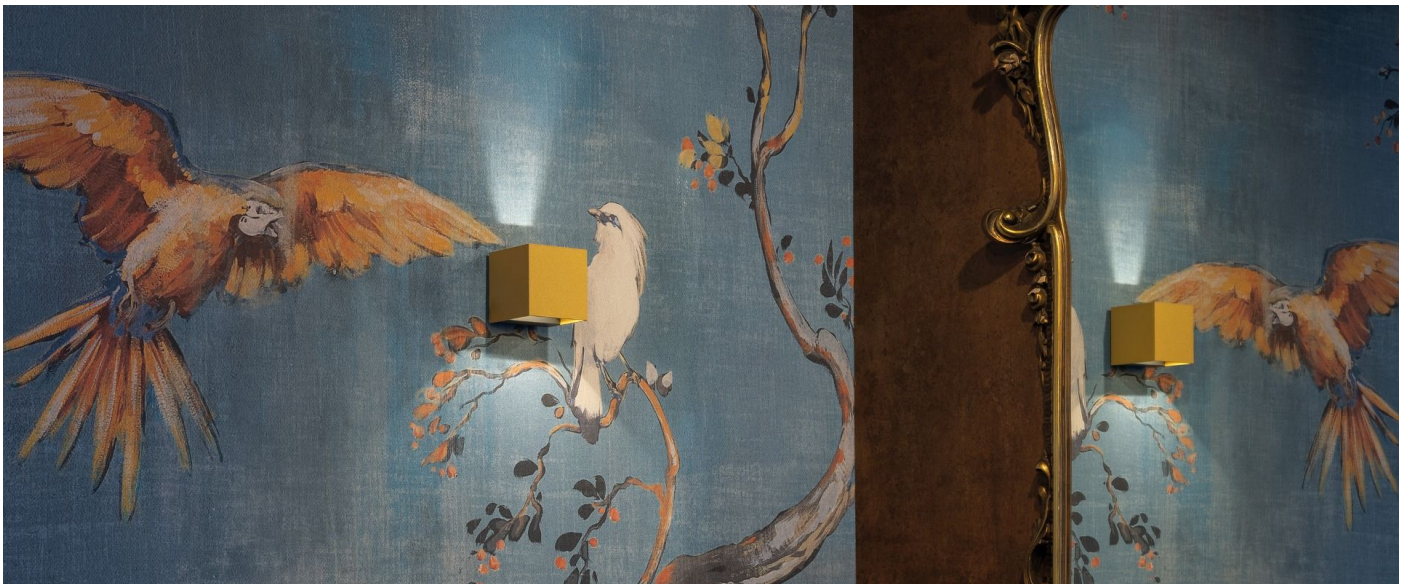
Available light beams: 15°, 30°, 60°, adjustable with removable masks.



**Dodo 60**

LL14301D3

**Lombardo.**

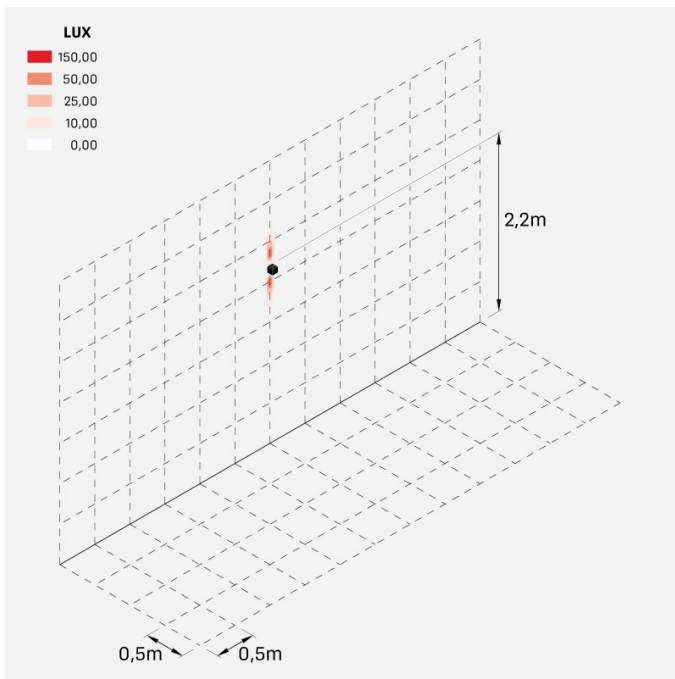


**Installation images:**

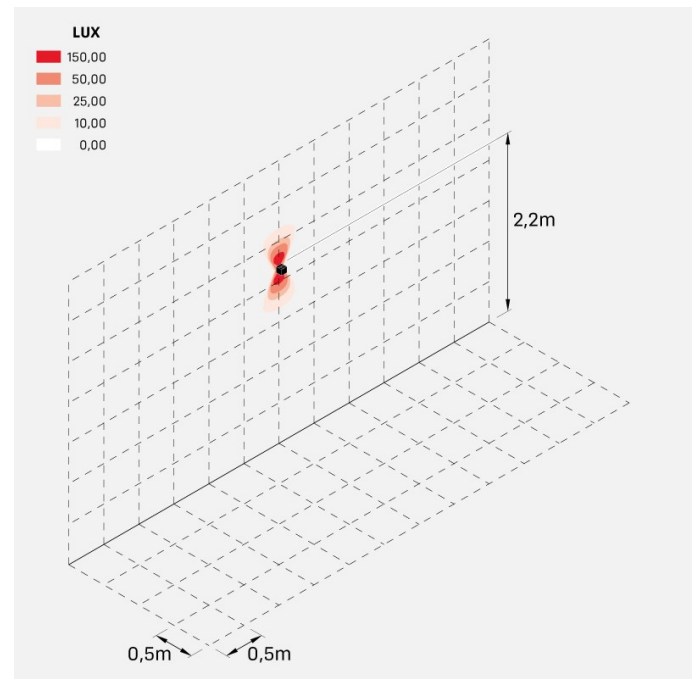


LL14301D3

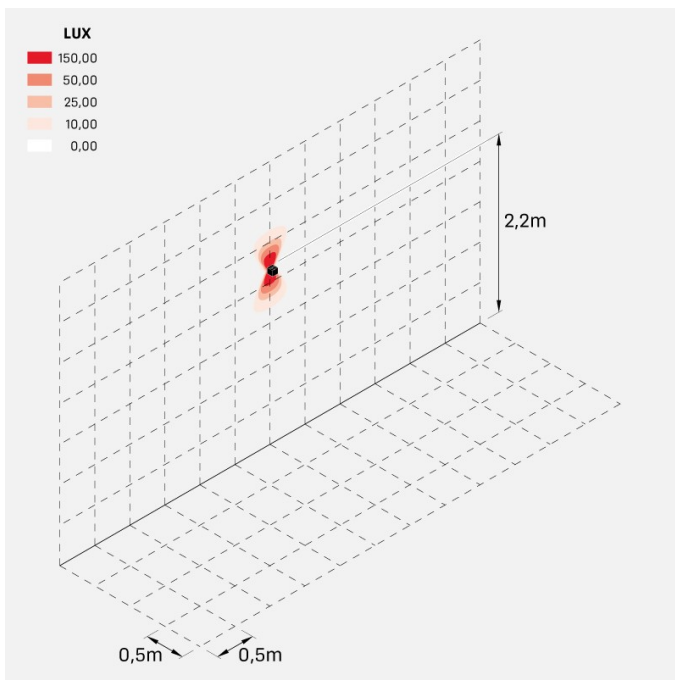
## Lighting simulation:



dodo\_60\_15



dodo\_60\_30



dodo\_60\_60

### Photometric curves:

